



Using KIS 2009 by Mark Boughton - Aussie PC Fix

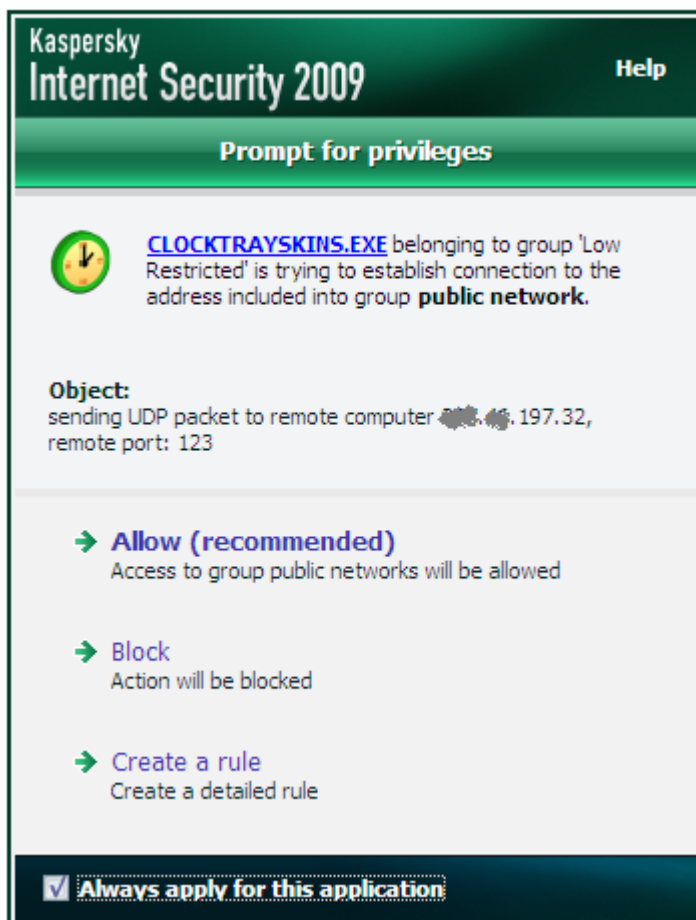


If you do not already have an *Activation code (license key)*, you may [purchase these at a discount from Aussie PC Fix](#) or [contact us](#), or buy online at full price from <https://estore.kaspersky.com.au>

While using your computer after KIS is installed, you may sometimes see alerts for programs asking for **Internet** or **Operation privileges**. Most Windows firewall programs have a similar alert system.

A *green/blue* alert will be displayed if a new or unknown program wants to access the **Internet**.

Click on **Allow** if you trust this program and want to let it access the Internet. You can also tick the box at the bottom to enable **Always apply for this application** which lets KIS remember this setting



If you do not know the application (in this example it was called CLOCKTRAYSKINS.EXE) then you should **Block** the program to deny it access to the Internet.

This is recommended just in case the application is a new virus or other malware which has slipped passed the antivirus, but usually require Internet access to work or at least propagate.

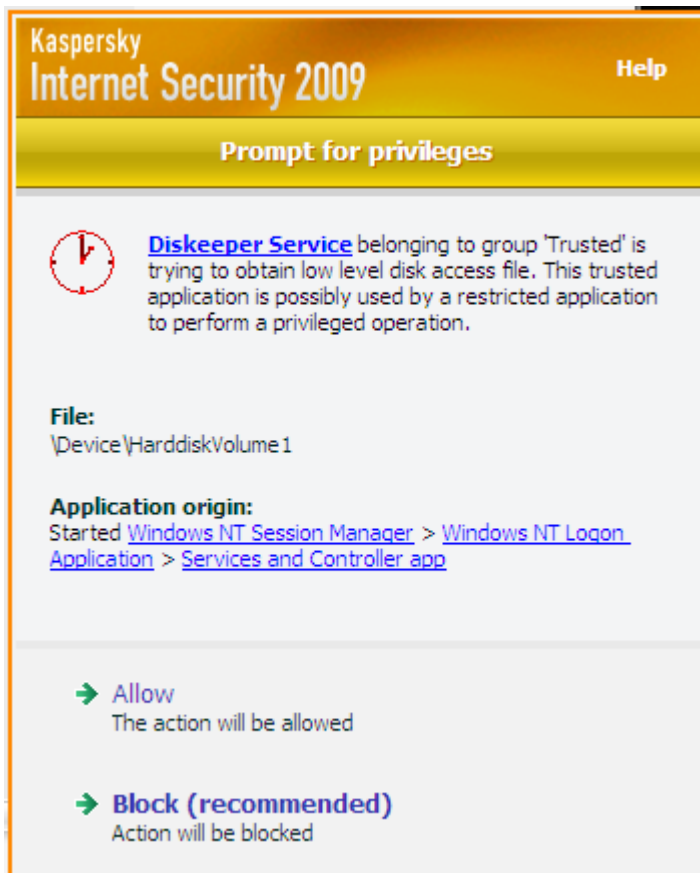
If you are unsure on what to answer, you should usually **Block** the program (without ticking **Always apply** at the bottom).

For example, you block Windows Media Player from accessing the Internet because you're not sure why it needs it, but then find you cannot download the track names for CDs as it uses a database from the Internet. In this case you should restart Windows Media Player and then allow it access.


The other type of *privilege* an application may ask for is to perform an **operation**. These are *gold/yellow* colour and are usually triggered by programs that act suspiciously on other files or applications, especially if they are located in certain special Windows folders.

Many of these alerts are from legitimate programs that just act suspiciously or need access to certain system areas, but you should always only **Allow** access if you trust the program asking for privileges.

Selecting **Interactive mode** instead of **Automatic mode** during the final setup stages in [Step 3 \(page 1\)](#) will cause many more of these types of alerts.



Application Rules – Advanced Usage

If you open KIS (click on the  near your clock!) and click on **System Security**, then **Application Filtering** > **Settings** you will see the saved rule settings for each application

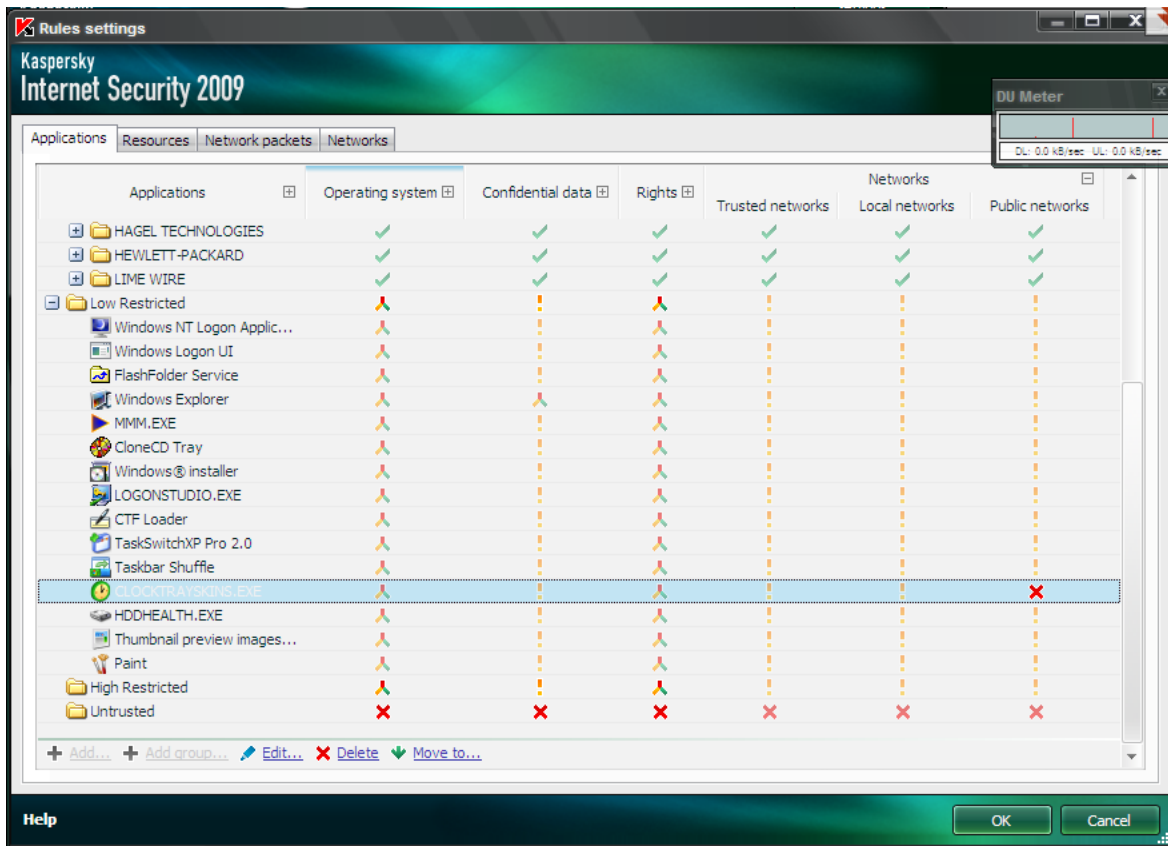


Below we can see the result of a **Block** on the CLOCKTRAYSKINS.EXE application when we were asked if it could access the Internet (Public Networks) AND **Always apply for this application** was also ticked. This block resulted in a red cross in the relevant column.

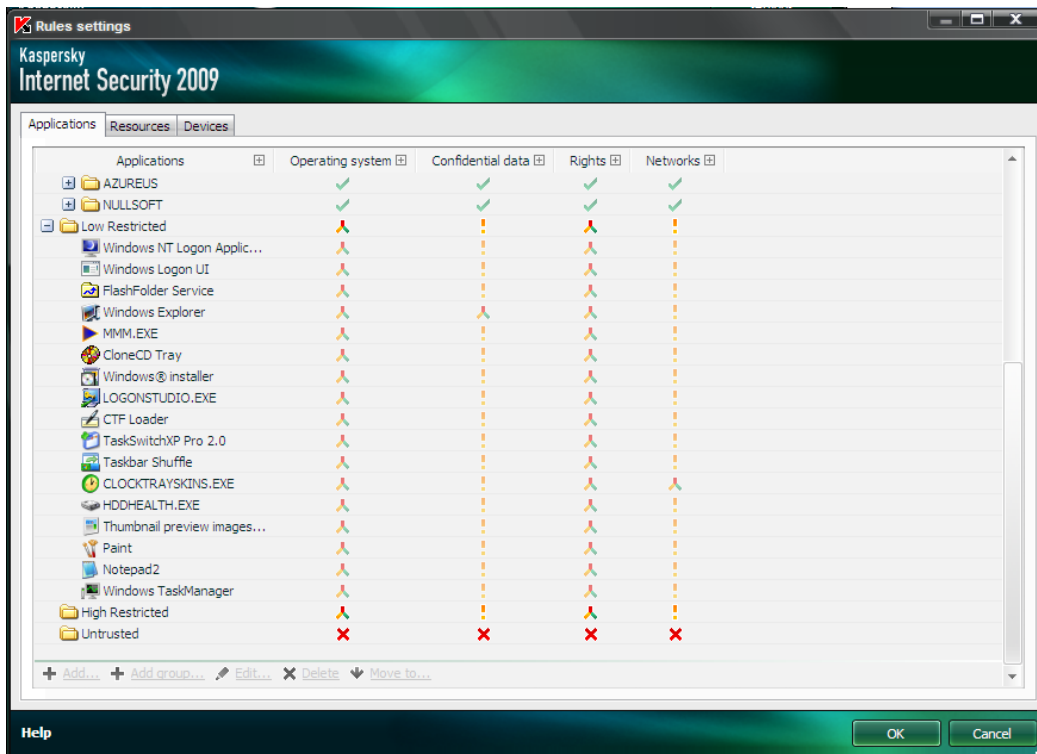
A yellow exclamation mark (!) means you will be asked each time (no setting yet saved), while a green tick (✓) means access will always be allowed.

Finally, the triangle shape (▲) means there are mixed responses in that column category. In the picture below you can see that the **Networks** category has been expanded (by clicking the plus), but e.g. **Operating System** is still compressed.

KIS also groups applications according to their trust level, e.g. **Low Restricted** or **Trusted**.



Compressing the *Networks* subcategories by clicking on the minus (-) changes the relevant **CLOCKTRAYSKINS.EXE** column back to mixed (^) since *Trusted* and *Local networks* settings have not been saved yet, but the application has been denied *Public network* access.



This has been a quick overview of **Kaspersky Internet Security 2009**.

This document will be updated in the near future!

Did you miss [Step 1](#), [Step 2](#), or [Step 3](#)?

**Reliable Canberra Computer Repairs,
Support & PC Services for Canberra
Home Users and Small Business**



**Call Mark on
0410 628 935**